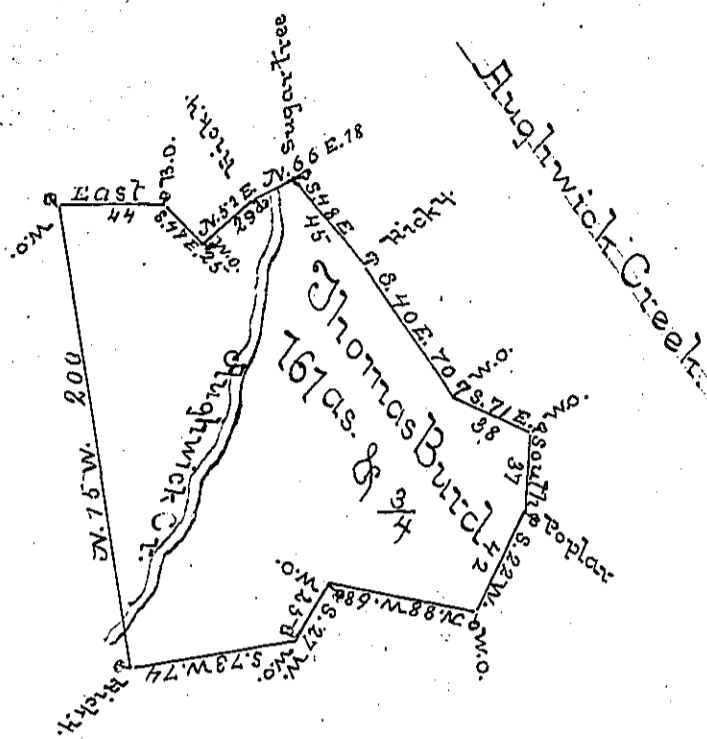


Draft & Comp<sup>d</sup> or Seal



A Draught of a Tract of Land Situate on Aughwick Creek  
 Dublin Township, Bedford County Containing One hundred  
 and sixty one &  $\frac{3}{4}$  Acres with the usual allowance of six Per Cent  
 &c. Surveyed for Thomas Burd the 13<sup>th</sup> Day of June 1766.  
 In Pursuance of an Order of Survey Dated August 1<sup>st</sup> 1766.  
 No. 552.~

George Woods D.S.  
 " "

To John Lukens Esq<sup>r</sup>: S.J.

*IN TESTIMONY* that the above is a copy of the original remaining on file in the  
 Department of Internal Affairs of Pennsylvania, made con-  
 formably to an Act of Assembly approved the 16th day of  
 February, 1833. I have hereunto set my Hand and caused  
 the Seal of said Department to be affixed at Harrisburg, this

first day of September 1896

*James Wilson*  
 Secretary of Internal Affairs.